



BS-300

Chemistry Analyzer

mindray

healthcare within reach

BS-300

Chemistry Analyzer

- Discrete, random access, fully automated
- 300 tests per hour, up to 480 tests per hour with ISE
- Up to 50 onboard chemistries and 4 ions
- Refrigerated reagent compartment
- Onboard capacity of 60 sample positions
- Automatic probe cleaning, liquid level detection & collision protection



- 9 wavelengths: 340~700nm
- Automatic dilution for abnormal sample
- External hand-held /Internal bar code reader (optional)
- Bi-directional LIS interface
- Low carry-over



- Unique and intelligent cuvette loading system**
- Disposable cuvette to avoid carry-over
 - Up to 30 segments on board (300 cuvettes)
 - Automated cuvette blank check
 - Intelligent cuvette loading



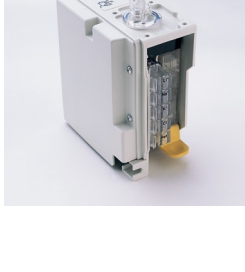
- High performance mixer design**
- Optimal homogenization in minimum time
 - Avoid cross contamination
 - Function immediately (within the same sampling cycle) after sample or the second reagent dispensed



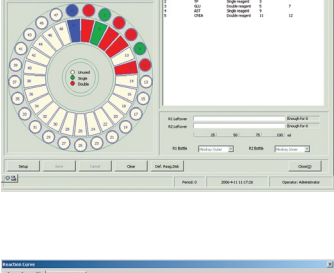
- Internal bar code reader**
- Used for sample programming
 - Applicable to various bar code systems of code 128, code 39, code 93, codabar, ITF, UPC/EAN
 - Capable to link with LIS bi-directional



- Refrigerated reagent tray**
- 50 reagent positions for R1 and R2
 - 24 hour non-stop cooling with Peltier element
 - Automatic reagent residue volume monitoring



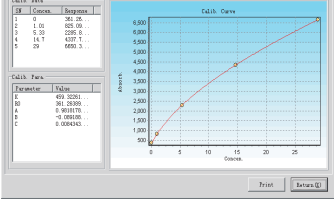
- ISE Module**
- Optional selection for K⁺, Na⁺, Cl⁻ or K⁺, Na⁺, Cl⁻, Li⁺
 - Throughput: Up to 180 or 240 tests per hour



- Dynamic and real-time display of running status**
- Running status of sample tray, reagent tray and reaction tray
 - Real-time monitoring of reagent residual volume and reaction temperature control curve



- Original reaction data record**
- Real-time monitoring of reaction curve
 - Simultaneously display primary and secondary wavelengths to avoid interference
 - Detailed profile of alert messages
 - Real-time diagnosis of system working status



- Optimum calibration curve**
- Selection of calibration methods; Factor, Linear, Point to Point, Spline, Log Logit, Exponential

BS-300

Chemistry Analyzer

Technical Specifications

System Function:
Automated, discrete, random access for routine, STAT, urine and homogeneous immuno assays; STAT sample priority
Throughput: 300 tests/hour, up to 480 tests/hour with ISE
Measuring principles: Absorbance photometry, Turbidimetry
Methodology: End-point, Fixed-time, Kinetic, Single/Dual reagent chemistries, Monochromatic/Bichromatic, Linear/Non-linear multi-point calibration
Programming: User defined profiles and calculation

Sample Handling:
Sample tray: 60 positions for primary or secondary tubes and sample cups
Sample probe: 3~45μl, step by 0.5 μl
Liquid level detection and collision protection
Probe cleaning: Interior and exterior wash, carry-over < 0.1%
Automatic sample dilution: Pre-dilution and post-dilution
Dilution ratio up to 1:150
Dilution vessel: Cuvette

Internal bar code reader (optional):
Used for sample programming
Applicable to various bar code systems of code 128, code 39, code 93, codabar, ITF, UPC/EAN
Capable to link with LIS in a bi-directional mode

ISE Module(optional):
Optional selection for K⁺, Na⁺, Cl⁻/K⁺, Na⁺, Cl⁻, Li⁺
Throughput: Up to 180 or 240 tests per hour

Reagents Handling:
Reagent tray: 50 positions in refrigerated compartment (4~10°C)
Reagent volume: 30~450μL, step by 1μL
Reagent probe: liquid level detection and collision protection
reagent pre-heating and inventory checking
Probe cleaning: Interior and exterior washing
carry-over< 0.1%

Reaction System:
Reaction rotor: Rotating tray, 80 disposable cuvettes with automatic loading
Cuvette: Optical length 5mm
Reaction volume: 180~500μL
Operating temperature: 37± 0.1°C
Mixing: Independent mixing bar

Optical System:
Light Source: Halogen-tungsten lamp
Photometer: Reversed optics, static fiber spot photometry
Wavelength: 340, 405, 450, 510, 546, 578, 630, 670, 700nm
Resolution: 0.001 Abs

Control and calibration:
Calibration mode: Linear (one-point, two-point and multi-point), Logit-Log 4P, Logit-Log 5P, Spline Exponential 5P, Polynomial 5P, Parabola
X-R, Westgard multi-rule, Cumulative sum check, Twin plot

Control software:

Operation Unit:
Operation system: Windows® XP Professional/Home SP2 or above
Windows® VISTA Home/Business
Interface: RS-232

Working Conditions:
Power Supply: 200~240V, 50/60Hz, 1000W or 100~130V, 50/60Hz, 1000W
Temperature: 15~30°C
Humidity: 35~80%
Water consumption: 3.5 L/hour
Dimension: 980mm x 710mm x 1200mm (W x D x H)
Weight: 175 Kg

DISTRIBUTOR:



MINDRAY is a trademark of Shenzhen Mindray Bio-Medical Electronics Co., Ltd. Specifications subject to changes without prior notice.
© 2010 Shenzhen Mindray Bio-Medical Electronics Co., Ltd. All rights reserved.
PIN: ENG-BS300-2102504-20100201

mindray

Mindray is listed on the NYSE under the symbol "MR"
Mindray Building, Keji 12th Road South, High-tech Industrial Park,
Nanshan, Shenzhen 518057, P.R. China
Tel: +86 755 26582888 Fax: +86 755 26582680
E-mail: intl-market@mindray.com Website: www.mindray.com